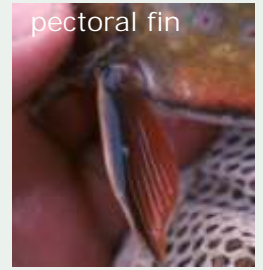
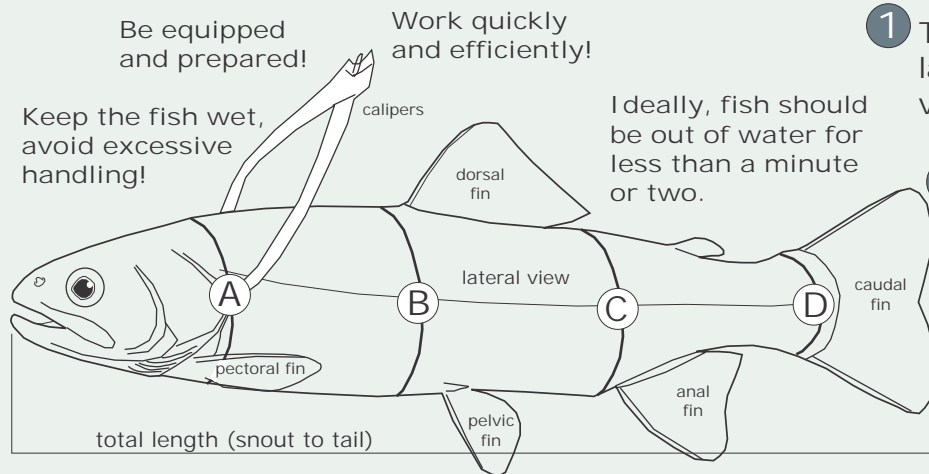


# Photographic Reference Suggestions:



## Measuring and describing your soon-to-be replica



1 Take a variety of photographs: lateral view, top view, bottom view, head, fins, eye, etc.

2 Using a calipers, flexible cloth, or a soft plastic measuring tape, measure and record the following in inches:

	Width	Girth
A	_____	_____
B	_____	_____
C	_____	_____
D	_____	_____
Total length:	_____	

Important measurements A - Immediately behind the gill cover; B - Deepest point on body; C - Immediately in front of anal fin, and D - In front of tail (caudal peduncle). \*If unable to get full complement of measurements, total length and girth at "B" are most critical.

3 Provide color notes or other observations:

\_\_\_\_\_

\_\_\_\_\_

\_\_\_\_\_

4 Complete form and send all materials (photos, etc.) to: Karl Scheidegger, 103 Academy St., Mt. Horeb, WI, 53572, or email electronic info to: fshwrshp @ mhtc.net.